



# Newsletter



Unitarian Universalist Fellowship at Easton

February 2009

## Sermons

### You Had Me at Woof

#### Feb. 1

Three of our members and friends will speak on the subject of dogs from a spiritual perspective with Janet Pfeffer serving as lay leader. Several invited canine guests will join us in the sacred space that we transformed from a veterinary clinic into our religious home.

#### Feb. 8, Ease, Fun, and Laughter

The more relaxed we are, the more fun we have, the more readily we create communities of deeply connected people. This is always true, and especially important to remember in the heart of winter. Come let us be at ease together. Rev. Paula Maiorano

#### Feb. 15, The Soul of a Poet

A classic love story, yes – and Boris Pasternak’s Russian novel “Dr. Zhivago” also reveals what it takes to hold on to our humanity when the world around us may be losing theirs. A service inspired by the combined Valentine and Presidents’ Day Weekend. Rev. Paula Maiorano

#### Feb. 22, About Joseph Priestley

Our Fellowship is in the Joseph Priestley District of the Unitarian Universalist Association. Remembered by most Americans as the discoverer of oxygen, Joseph Priestley, a Unitarian minister, is also a significant figure in the history of our UU faith. Come hear why. Rev. Paula Maiorano

Sunday Service and  
School  
10:00 a.m.  
7401 Ocean Gateway

## Inside . . .

Religious Education .....	2
Lifethemes .....	2
President’s Corner .....	3
Board News.....	4
Gatherings .....	4
Social Action .....	5
Member Services.....	6
Search Committee Update .....	6
New Members’ Biography .....	7
Financial Status Update .....	7
UUFE Contacts .....	8

**CALL TO WORSHIP**

Our minister usually preaches three Sundays a month. For that fourth Sunday, the Worship Committee plans lay-led services and occasionally invites a guest minister or speaker from outside the congregation.

How does one get to deliver a sermon or help in creating a worship service? We welcome your ideas or proposals for a sermon topic or service. We’re looking for discerning, interesting, and spiritually moving themes, and articulate and comfortable speakers. If you’re so inspired, speak to any member of the Worship Committee: Nancy Orr, Chair, Dwayne Eutsey, Janet Pfeffer, John Turner, Laura Winne, or Sally Woodall. The committee will consider your proposal, offer help in developing it into a complete service of worship, or suggest other avenues if it does not lend itself to the purposes and format of worship. Our worship calendar is nearly full through May, but we have many opportunities for lay-led services during the summer. Speak up and join us in this creative, challenging, and rewarding work!

*Nancy Orr*



**Let’s Party and Dance on Feb.21 !**  
See page 4 for details (Gatherings)

**UUFE Masquerade Ball**

# Religious Education



## Calendar Events

- Feb. 1 Chinese/Japanese Religion: Taoism
- Feb. 8 Chinese/Japanese Religion: Shintoism
- Feb. 15 Chinese/Japanese Religion: Confucianism
- Feb. 22 African: Dogon Creation Myth

**RE Donation Needs:** Drink boxes.

## Our Religious Education

The last Sunday in January and into February we begin our study of Chinese and Japanese worship practices. We will begin on January 25<sup>th</sup> with the Chinese New Year! (The Chinese New Year actually begins January 26<sup>th</sup>. but in our RE classes we like to get a head start on things! The next three Sundays we look at the basics of the Chinese and Japanese religions of Taoism, Shintoism and Confucianism.

**Taoism** is a philosophy or way of life that was started by Lao Tsu who believed that the way to happiness was for people to learn to “go with the flow”. **Shinto** is the term for the indigenous beliefs and practices of Japan. Shintoists insist on maintaining their own characteristics and inner depth while working toward the peaceful coexistence of human beings. **Confucius** was a philosopher in ancient China about 500 BC whose primary belief was that people could achieve peace by doing their duty and cooperating with society. If people rebelled and everyone tried to do his or her own thing, then the world would be full of fighting and unhappiness.

At the end of February we will begin the study of African culture and religion.

## Something to Think About

Today we tell our children, “Enjoy the journey.” We agree to do the following things with them:

Talk about the “real you”, show them that uncertainty can be good – no one has to have all the answers, and

Teach them to feel balanced about loss and gain.

– from the book “The Seven Spiritual Laws for Parents” by Deepak Chopra.

See you on Sunday! *Liz Hausburg CRE*  
[www.uuifeaston.org](http://www.uuifeaston.org)

## Lifethemes

### From Paula’s Pen

#### Mid Point Reflections

**W**e are humming right along into the half way point of my interim time with you. While not all of our work together is complete, we have truly accomplished a lot since August. UUFE is in a very exciting, dynamic stage.

Many opportunities for small group connections are offered, and our community outreach has expanded.

New committees have formed and established ones re-energized. Committee and board work has clearly been differentiated.

The role of the minister and that of the board has been clarified. We are two collaborating sources of authority, whose partnered leadership has been established by congregational vote. (Well, it will be that way when you vote to call your newly settled minister, and I function that way now with the board).

The role of the Committee on Ministry, always a bit nebulous, has been emerging. Much is planned to share this committee’s work in the second half of the year.

Worship patterns have been changed, so that a quiet sanctuary awaits those who appreciate a meditative atmosphere before service.

Visitors arrive and new opportunities to learn about our faith are provided.

Very importantly, the number of children participating in Religious Education on Sunday morning is growing quickly. This is often an unseen ministry, and yet it is very much a part of the life blood of our Fellowship.

In early February, my interim progress report will be available in the office. Take a look at it. Ask me questions. I am here for you.

In peace and with blessings,  
Paula

### Chalice Circle News

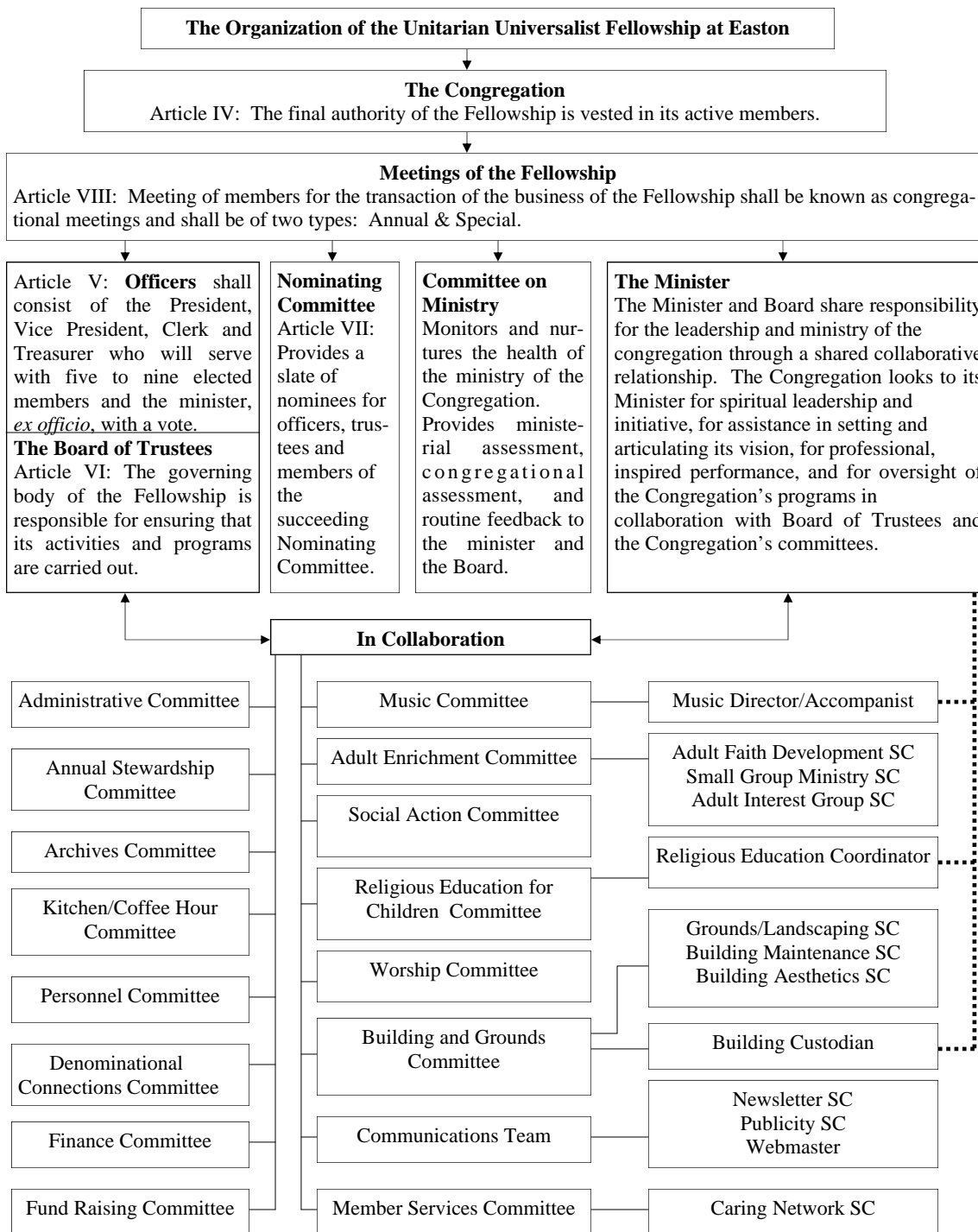
The first Chalice Circle at UUFE is now meeting on the first and third Monday of each month. A group of eight meets to discuss meaningful topics, to develop intimate relationships with each other, and to build a supportive community. If you are interested in joining us, now is a good time to engage in this spiritual group.

Soon, the group will write their covenant: a set of promises of how they want “to be” with each other. Our covenant will include: ground rules as to how the sessions will be run, the guidelines to be used for their interaction, how long they will meet (for each session and over time), and an agreement to provide service to the congregation and to the wider community.

For further information, contact Ann Davis at (410) 745-2461.

# President's Corner

One of the roles of the Interim Minister is to assist the congregation in “understanding the appropriate leadership roles of the minister, church staff, and lay leader.....” At a retreat in October, Paula Maiorano led the Board in a review of the current leadership structure and related roles. The Board concluded that it would be helpful to create an organizational diagram that reflects how the Fellowship is currently operating. The Uufe Organizational Diagram shown below is the result of that effort. The diagram shows the committees currently functioning in the Fellowship and articulates the primary functions of the Board, the Nominating Committee, the Committee on Ministry, and the Minister. The abbreviation “SC” stands for subcommittee. The dotted lines indicate staff to staff collaboration. Although John Turner is currently our volunteer Choir Director, the diagram reflects our desire to have a half time Music Director next year. If you have any questions, please feel free to contact any member of the Board. This diagram clearly indicates that we have a high degree of volunteer involvement in the day-to-day operation of the Fellowship—a real blessing!





## Board News

**B**oard Member, Peter Paul, has successfully negotiated a  $\frac{3}{4}$  percent reduction in the interest rate we pay to Talbot Bank on the Fellowship's building mortgage. The new rate is 6.75% with all other terms remaining the same. This adjustment could save the Fellowship over \$1,000 annually.

Dick Doughty was pleased to report that the Adult Enrichment Committee (Cluster) is now fully activated with the following leadership: Paul and Peggy Sharp are co-chairs of the Committee with Amy Hadsell heading the Adult Faith Development Sub-Committee, David Stevens leading the Adult Interest Group Sub-Committee, and Debbie Easterling coordinating the Small Group Ministry Sub-Committee.

JPD is starting a new Social Action program. Each congregation is being asked to designate a Social Justice Representative and alternate to participate in a training session on April 26. Dick Doughty reported that Sandra Henry-Stocker volunteered to participate in this program.

The Board approved a broadened policy relating to Alcohol Beverage Use and Alcohol and Drug Abuse for the Fellowship. You can read the policy on page 5 of this newsletter.

*Jane Tereby*



## Gatherings

**Women's Spirituality Circle, Tuesday, Feb 3:** We will meet at 7 p.m. to create and walk a labyrinth.

**First Friday Youth Night returns Feb. 6:** Bring a friend at 7 p.m. We will have 'Top Your Own Hotdogs' (veggies too!) and games to play. We will also begin planning our Spring Sleepover. Contact Colleen Ronning (410) 770-3843 for details.

**Women's Lunch, Thursday, Feb. 12:** We will carpool from the church at 11:15 to the home of Tineke Tan, #5 Manor Ct., Stevensville, MD. If you prefer to drive, the directions are as follows:

Drive West on Route 50 past Chesapeake College. Cross the new Kent Narrows Bridge and exit at Route #8, near the Romancoke-Stevensville sign. This is before the Chesapeake Bay Bridge. (If you end up in Annapolis, turn around.) Route 8 changes to Route 18. Proceed on Route 18 and turn right at the third street, Larch Place. Drive four blocks to the stop sign, turn left onto Old Lovepoint Rd. Bear left and take the second right on Nichols Manor Rd. Drive to the end and turn left on Monroe Manor Rd., then left onto Manor Court. Tineke's house (#5) is on the right and the number is posted on the mailbox. Please contact Ann Davis if you plan to attend 410 745-2461 or at awd1620@aol.com

*(Editor's comment: I suggest the car pool.)*

**Friday Night Movie, Feb. 13:** Potluck dinner at 6:30 and film at 7:00. The movie will be *Elizabeth*, played by Cate Blanchett. Queen Elizabeth took the throne of a Roman Catholic country as a young woman and declared the nation Protestant. She ruled for 45 years -- all at great personal cost. Director Shekhar Kapur. An Oscar-winning treatise on absolute power and its human toll sees the virgin queen sacrifice happiness with Lord Robert Dudley (played by Joseph Fiennes) and place her trust in Sir Francis Walsingham (Geoffrey Rush) amid assassination threats.

**The Fourth Annual Masquerade Ball, Saturday Feb 21:** This year's ball starts at 7:00 p.m. at the Fellowship and features live music of the band 'Off the Hook' with our own Del Joiner at the keyboard. Delicious hors d'oeuvres and desserts will be served and a cash bar will be available. Admission is \$25 per person. Please contact Beth Hansen for tickets (410) 253-0214.

**Book Group, Thursday, Feb. 26:** You are welcome to join us at 11:30 a.m. for an informal discussion of our current book *Loving Frank*, by Nancy Horan. Bring your brown-bag lunch and join us for tea/coffee, cookies and good discussion. We meet in the Archer-Shee room and look forward to seeing you. Contact Joanie Baynard at 410-770-8277 if you have any questions.

### Hospital Bazaar Shop

Thank you one and all for the contributions of clothing, etc. you have been donating! We have earned \$538 since our project began about a year ago. The Bazaar will not accept any winter clothing after March 1, so please check closets for discarded winter items and start thinking of unwanted spring items. You may bring items to church or call me at 410-770-8277 to make arrangements to bring them to my house. I will also place a box in the coat closet for your donation.

*Joanie Baynard*



**Our UUFE Favorite is Off the Hook**

Talbot Partnerships honored the retirement of its founding executive director, Janet Pfeffer, on January 18, at the Avalon Theatre. Off the Hook, her favorite band led by our favorite keyboard player, Del Joiner, supplied the music. Proceeds benefited drug and substance abuse programs in Talbot County.

**UNITARIAN UNIVERSALIST FELLOWSHIP AT EASTON  
POLICIES RELATING TO:  
Alcoholic Beverage Use, and Alcohol and Drug Abuse**

**I. General Policy Regarding Alcoholic Beverages.**

Except as provided below, alcoholic beverages shall not be used on UUFE's premises by any of its employees, members or visitors.

- A. Serving alcoholic beverages is permitted at wedding receptions, memorial services and at UUFE's masquerade ball or similar event. Permission to serve alcoholic beverage at other events shall be at the discretion of the Board of Trustees. Food shall be served at all such events.
- B. When alcoholic beverages are served, nonalcoholic alternatives will also be offered with equal attractiveness and accessibility. Further, all bottles, punchbowls, pitchers, etc. which contain alcoholic beverages will be clearly labeled "contains alcohol" if that fact is not otherwise obvious.
- C. The serving of alcoholic beverages at any UUFE event shall not be publicized as a main attraction of the event.

The sponsor of any event which includes the serving of alcoholic beverages shall be responsible for ensuring that anyone who becomes intoxicated at the event is provided immediate transportation home.

**II. Alcohol and Drug Abuse.**

The UUFE does not tolerate alcohol or substance abuse, including the use or possession of any illegal drug or legally controlled substance, by any of its employees, members or visitors (a) while on UUFE premises, (b) at such other times as would impair their work for UUFE or (c) at any event or on any occasion if such abuse would adversely reflect upon UUFE's reputation.

**III. Compliance.**

UUFE's Board of Trustees or, in emergency situations - its Officers, may take such action as they deem necessary and appropriate in order to ensure compliance with any of the foregoing provisions.

*Approved 1/13/2009*

**Social Action**

**Social Action Sponsors the Needy and Promotes Green**

**Donations:** In December, the Social Action Committee donated \$150 to the Brighter Christmas Fund. In addition, \$180 was donated to the Good Samaritan Fund, a fund that our fellowship refers people to when they are faced with immediate need and call our office for help. The committee also sent \$50 to the UU Social Justice group as half of \$100 we had promised to cover a portion of the expense of the UU table at the DC Green Festival this summer. Sandra Henry-Stocker contributed the remaining \$50.

The Committee also supported the Talbot Interfaith Shelter with both a contribution of \$300 and with volunteer support. We appreciate everyone in the fellowship who participated in this worthy project to keep homeless people out of the cold. For those who ate and slept in our meeting room, this kindness was well appreciated. We housed a number of individuals and a family of four during our hosting week and turned our meeting room into a surprisingly welcoming multi-purpose room with dining, sleeping, lounging and play areas.

**Sister Cities**

Under David Stevens' leadership, the Social Action Committee is looking into opportunities to pair up with a community in a needy nation, such as Haiti, to help sponsor opportunities and better living conditions for people with whom we might share resources as well as friendship.

Sandra Henry Stocker

CASA (Court-Appointed Special Advocates) and the Department of Social Services are looking for volunteers. CASA volunteers advocate for children under the protection of the Talbot County Circuit Court because of abuse, neglect or abandonment. Anyone interested should visit CASA's web site at <http://www.casaoftalbot.org/>.



## Member Services

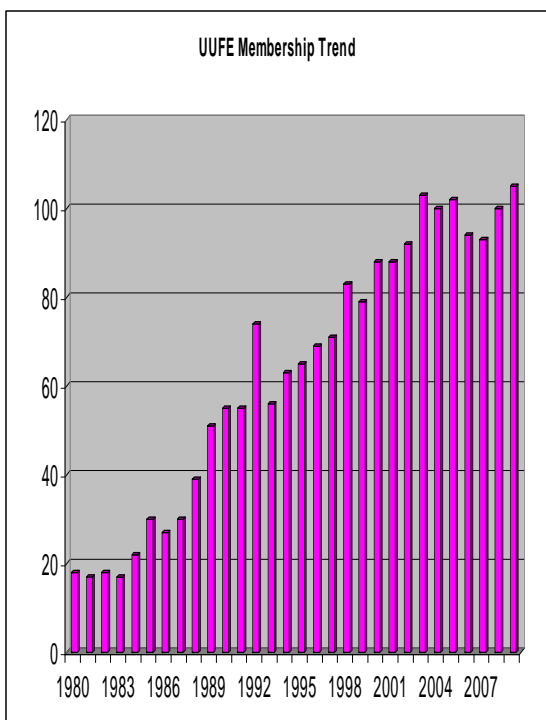
The next meeting of the committee is Wednesday, Feb. 11 at 3:00 p.m. at the Fellowship building.

### A Hospitable Congregation and Healthy Growth

Long-time members and friends who have been attending services in January have commented on the increased numbers of people at the worship service. Extra chairs are needed most Sundays and we have a noticeable need for more hymnals. For me, the most gratifying thing about our increasing numbers is that during coffee hour it would be difficult for an outside observer to distinguish between newcomers and long-term folks. In church circles the newest description of this type of behavior is **radical hospitality**. The term may be new, but at UUFE the concept is not. Our members and friends embrace newcomers with genuine warmth and with the verbal and non-verbal message "we are glad that you are here and we want to get to know you better".

Dick Doughty created the following graph by tracking the membership numbers that we have reported to the Unitarian Universalist Association each January. My prediction for the New Year is that with this kind of **radical hospitality** operating at UUFE, our member numbers for January 2010 will be off the chart!

Gail Woodall



www.uufeasaton.org



## Search Committee Update

As mentioned in the January newsletter, the Search Committee is currently meeting several pre-candidates in person to hear them preach and explore whether there is a "match" of their ministry to our congregation. If all goes well with this process, the Committee will then select a final candidate who will visit Easton sometime in April or May for "candidating week" (actually a ten-day period). During this time, the candidate will preach two sermons, one at the start of the week and the second the following Sunday. Over the course of these ten days, the candidate will meet with committees, attend Fellowship activities, visit with the Board, and generally be available for our members to become acquainted with the candidate's personality and professional capabilities. Our goal is to provide everyone an opportunity to participate and get to know the candidate. At the end of the candidating period, a special congregational meeting will be held to ratify or to reject the Search Committee's choice, thereby giving our members the final decision in this matter. We anticipate a satisfying conclusion to this intense but rewarding process of searching for UUFE's settled minister. Feel free to ask any of the Search Committee members (Jean Rhian, Gail Woodall, Tom Anovick, Dwayne Eutsey, Laura Winne, Nancy Orr, or Juliet Smith) about the committee's work.

Juliet Smith

### Renewing UUFE's Denominational Connections Committee

In this exciting time of Change and Renewal, the UUFE Board thought this might be a perfect time to grow the promise of Our Uncommon Religion by revitalizing our **Denominational Connections Committee**. The Board has asked Suzanne Clarke to spearhead this renewal.

As you may know, the **Denominational Connections Committee** reaches out and links us with the wider UU community, both near and far. We know there are many members at UUFE who have already attended the **UUA General Assembly**, the **JPD Conference**, and/or are already **Chalice Lighters** or **Chalice Keepers**. We would like to ask you to make yourselves known so that we can learn about your experiences, and ask your advice on how we should proceed from this point.

You are invited to join Rev. Paula Maiorano and Suzanne Clarke following the service on Sunday, February 22 to assess where we have been and where we would like to go! Also, save the date for:

**2009 JPD Spring Conference:**

**April 24-25, 2009**

***Navigating Changing Times***

DoubleTree Hotel, Downtown Wilmington, DE

700 N. King Street, Wilmington, DE 19801

Suzanne Clarke (tel. 410-967-7369)

### Library News

If, in the coming months you have a book you would like to donate to our library, or have recently donated one, please send an e-mail to me with a brief description of the book and we'll try to mention it the next newsletter. Thank you, Marian, the librarian [loisg@goeaston.net](mailto:loisg@goeaston.net)

## NEW MEMBERS' BIOGRAPHY – Peggy & Paul Sharp

Peggy & Paul are already familiar to many of us at the UU Fellowship. We first met them at last year's Mardi Gras Masquerade Ball. They read about the Ball in our local Newspaper, and because they both love to dance, they decided to attend the Ball. They had such a good time that they began attending services shortly thereafter. Recently Dick Doughty asked them if they would consider heading a newly-formed Adult Enrichment Committee. However, they were not yet members. But after a little subtle pressure was applied they "signed the book."

Peggy & Paul are not new to Unitarian Universalism. When they lived in Gaithersburg they attended both River Road and Rockville UU churches. They came from differing religious backgrounds. Peggy an Episcopalian and Paul a Mormon. The UU faith seemed a good spiritual fit for them. They appreciate the warmth and friendliness of our Fellowship and welcome the growing emphasis on spirituality in our services.

Career-wise, they are fortunate in having converging interests in their vocations. Because of Peggy's background in interior and architectural design and in construction management she currently serves as manager of the Eastern Shore division of a custom home builder. Paul is a management consultant for a company that provides expertise to home builders all over the United States and Canada.

Their home in Easton reflects Peggy's intense interest in gardening and Paul's talent in growing vegetables in raised beds. Their backyard is an oasis of beauty that serves as their outdoor living room in warmer weather. As a Mormon missionary in Southern France, Paul developed an interest in culinary arts. They both love to cook, and their dinner guests can attest to their cooking skills. Sailing is also a favored pastime, and Peggy would like to find more time to develop her skill in oil painting.

We are delighted to welcome Peggy & Paul into our membership and know that we will benefit from their many interests and talents.



*Jean Griffith*

## UUFE Financial Status Update

As of December 31, 2008, one half of UUFE's current fiscal year (7/08-6/09) has elapsed! A great time to issue a financial report. A detailed report of our operating fund's income and expenditures is posted on the bulletin board in the church office each month.

Our Fellowship continues to meet its financial obligations. Maintaining a full time interim minister, while recruiting for a full time called minister, presently absorbs the majority of our monetary resources.

### Operating Fund

The projected operating expenses for this fiscal year are \$145,080. As of Dec. 31, 2008, 44% of this amount has been spent. The pace of spending will accelerate as we move into the final stages of the ministerial search process.

So far, we have received 62% of this fiscal year's Operating Fund pledged total of \$106,000. If we receive the remaining 38% of these pledges, we should end this fiscal year in the black, with some surplus. We have \$36,500 in the bank and expect to receive \$6,000 from other sources of income, such as fundraising. Any surplus funds will be needed in FY '10 when we hire a new minister.

### Capital Fund

Two Capital fund drives have been ongoing since 2004. The most recent one, the Extended Capital Fund drive, ends April 30. We anticipate receiving remaining pledged funds to repay some of the capital loans, leaving a balance due of \$45,000.

### Mortgage

Our mortgage balance of \$236,900 is due in 28 years.

### Bequest from Polly Thompson's Estate

We recently received \$10,000 from Polly's estate and have put it into reserve pending further consideration of our FY 09-10 operating and capital fund budgets.

Many thanks to everyone for your faithfulness and generosity in financially sustaining UUFE. If you have any questions about this information, please contact Peter Paul or Liz McGrory.

**200  
YEARS**

**HAPPY 200th BIRTHDAY**  
Charles Darwin, Born in  
Shrewsbury, England on  
February 12, 1809

## UUFE Contacts

Interim Minister	Rev. Paula Maiorano, 410 822-8103
President	Dick Doughty, 410 673-7580
Coordinator of Religious Education	Elizabeth Hausburg, 410 476-4774
Minister Emeritus	Daniel G. Higgins, Jr., D.Min, 410 745-3462
UUFE Office	410 822-8103
Newsletter Editor	Frank Greenburg, 410 819-8810

(Deadline for the March UUFE Newsletter is February 15)



# UNITARIAN UNIVERSALIST ASSOCIATION OF CONGREGATIONS



[www.ufeaston.org](http://www.ufeaston.org)

8

February 2009

THE UNITARIAN UNIVERSALIST FELLOWSHIP AT  
EASTON, MARYLAND  
PO BOX 1162  
EASTON, MD 21601

FIRST CLASS POSTAGE

